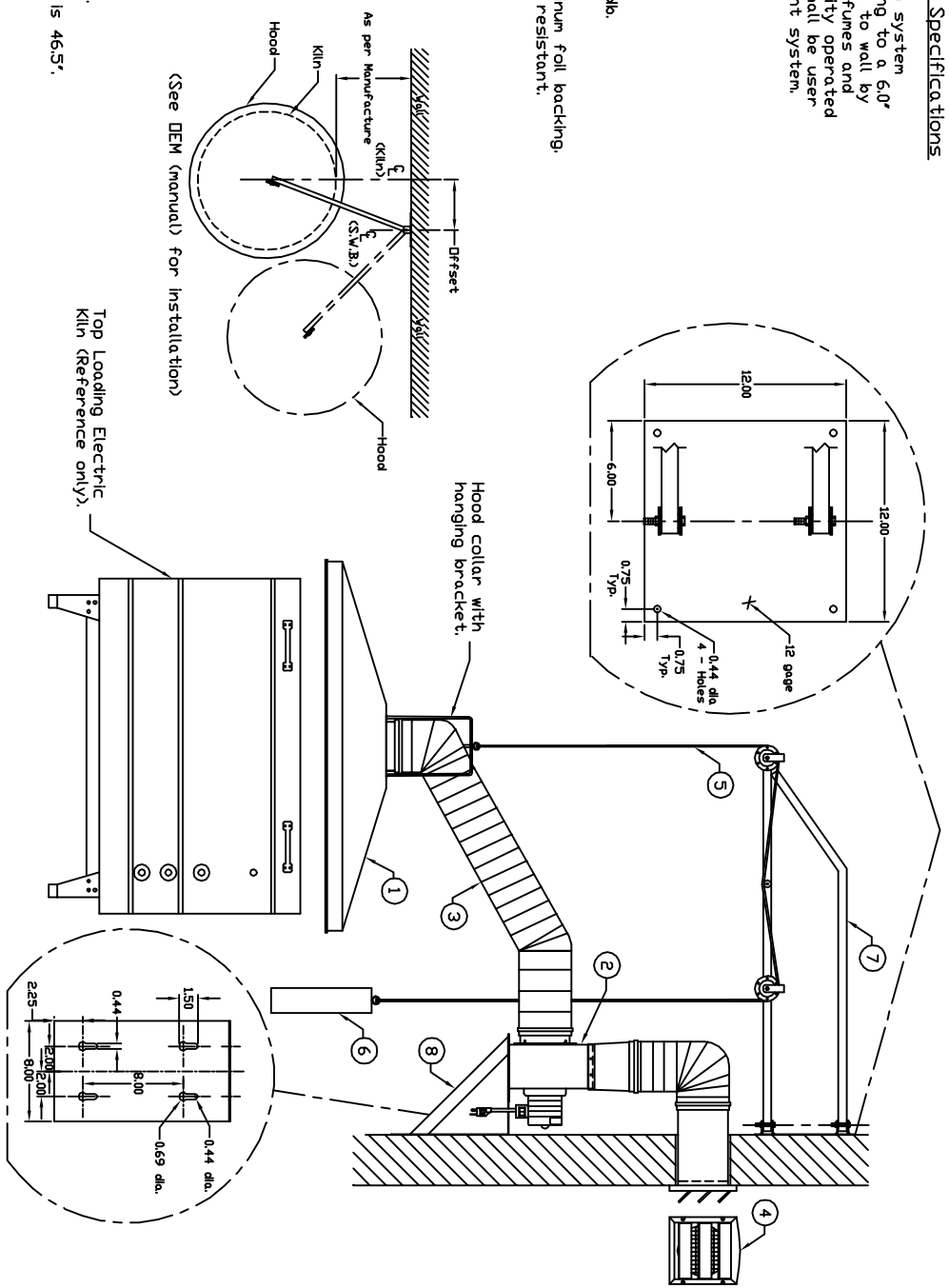


Model: 1544-Swinging Wall Bracket Negative Pressure Specifications

The Vent-A-Kin model 1544-SWB negative pressure ventilation system shall include a 44.0" diameter metal spun aluminum hood tapering to a 6.0" diameter exit. A single speed motor with fan (blower) mounted to wall by means of a support bracket, shall draw and propel exhaust fumes and heat via a flexible hose to a exterior surface mounted gravity operated louver. The placement of the hood and blower subassembly shall be user adjustable via a swinging wall bracket pulley and counterweight system.

- 1) Conical collection hood:
 - 44.0" diameter, 0.063 gage aluminum, alloy 1100-0.
- 2) Non-explosion proof blower:
 - 1/2 hp, 1/60/115 motor.
 - 450 cfm @ 0.0" wg, 3.6 amps, 1600 rpm.
 - Maximum continuous motor Temperature 250 deg. F.
 - Sound data approximate db at 5 feet: high 88db, low 54db.
- 3) Flexible exhaust hose:
 - Triple ply laminate, aluminumized polyester face and an aluminum foil backing.
 - Corrosion, moisture, temperature (250 deg. F.), and flame resistant.
 - 6.0" diameter, 10' (ft.) length.
 - Flexible hose fastened by plastic hose clamps (qty=2).
 - UL listed number 723.
 - Cut to shortest length permissible.
- 4) Exterior surface mounted louver:
 - 6.0" diameter discharge.
 - Bird screen.
 - Three (3) gravity operated shutters.
- 5) 3/8" diameter plastic coated steel cable:
 - 10' (ft.) length.
 - Two (2) 3/8" galvanized steel cable clamps for fastening cable to counterweight and blower.
- 6) Counterweight:
 - 3.0" diameter cold rolled steel,
 - painted VAF/VAK black.
 - weight = 14.0 lbs.
- 7) Swing wall bracket with pulley system:
 - Continuous friction hinge design
 - 10"x10"x45.0" length structural tubing.
 - two (2) ball bearing pulleys and one (1) resistance pulley.
 - two (2) pulley safety straps.
 - wall to center of hood when SWB is perpendicular to wall is 46.5".
- 8) Blower wall support bracket:
 - 12 gage steel.
 - Painted VAF/VAK black



LETTER	ALTERATION	DATE	BY
A	New Continuous Friction S.V.B. Design Added	4/10/07	B-Brandon
B	Blower motor had two speeds	6/16/09	B-Brandon

UNLESS SHOWN OTHERWISE TOLERANCES SHOULD BE: 1) .XXX 2) .XX 3) FRACTIONAL DIMENSIONS ± 1/32" 4) ANGLES ± 0° 30'		ALL INFORMATION CONTAINED HEREIN IS PROPRIETARY, AND MUST NOT BE REPRODUCED OR MADE PUBLIC WITHOUT WRITTEN CONSENT FROM Vent-A-Kin Corp.	
PROJECT NUMBER XXX DATE 4/10/07 SCALE NTS DRAWN BY B. Brandon CHECKED BY BILL OF MATL		TITLE: Model: 1544-NP-SWB (P-10BP Blower) Negative Pressure Vent-A-Kin Corp. 51 Botstord Place Buffalo, N.Y. 14216 DWG. NO. B-1166 REV. B	