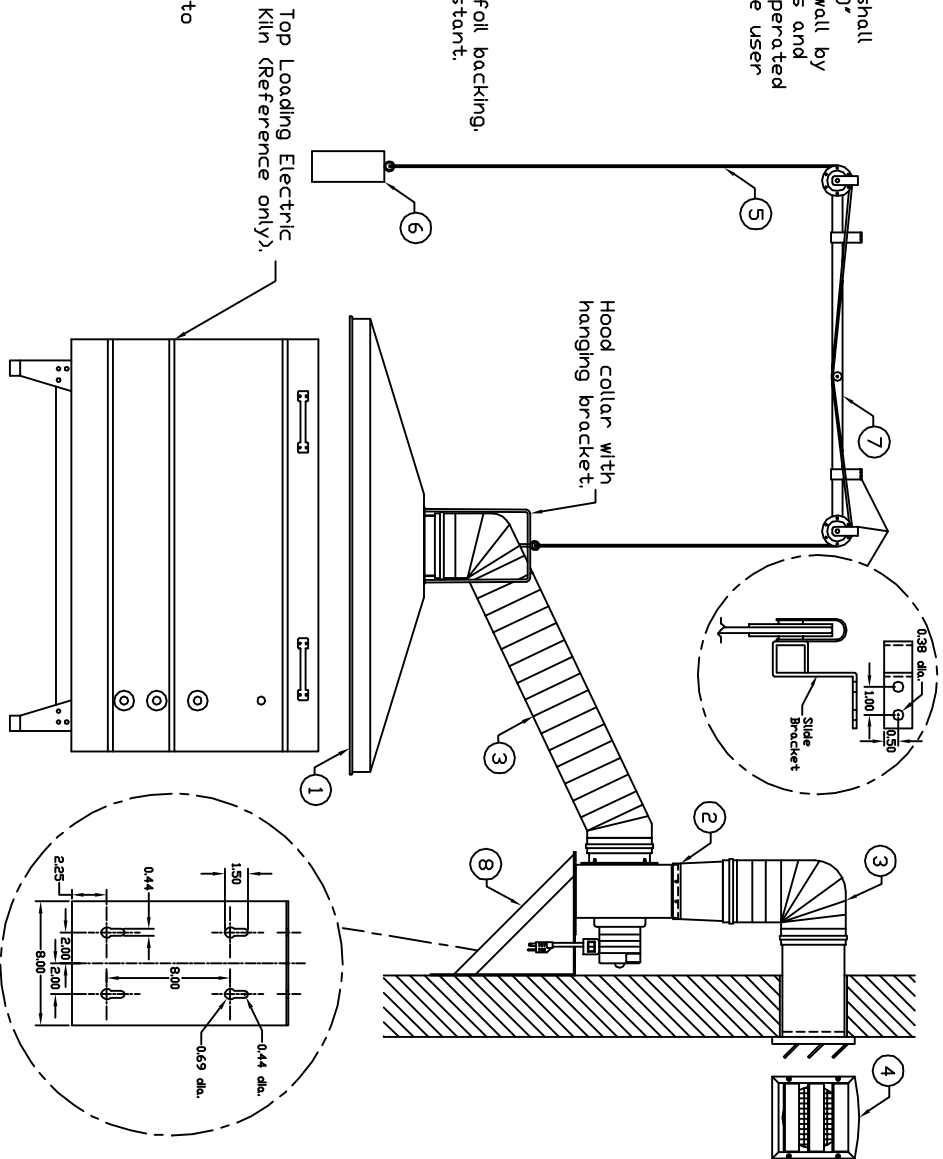


Model: 1544 Negative Pressure Specifications

The Vent-A-Kiln model 1544 negative pressure ventilation system shall include a 44.0" diameter metal spun aluminum hood tapering to a 6.0" diameter exit. A single speed motor with fan (blower) mounted to wall by means of a support bracket, shall draw and propel exhaust fumes and heat via a flexible hose to a exterior surface mounted gravity operated louver. The placement of the hood and blower subassembly shall be user adjustable via an overhead pulley and counterweight system.

- 1) Conical collection hood:
 - 44.0" diameter, 0.063 gage aluminum, alloy 1100-0.
- 2) Non-explosion proof blower:
 - 1/2 hp, 1/60/115 motor.
 - 450 cfm @ 0.0" w.g., 36 amps, 1600 rpm.
 - Maximum continuous motor Temperature 250 deg. f..
 - Sound data; approximate db at 5 feet: high 68db, low 54db.
- 3) Flexible exhaust hose:
 - Triple ply laminate, aluminumized polyester face and an aluminum foil backing.
 - Corrosion, moisture, temperature (250 deg. f.), and flame resistant.
 - 6.0" diameter, 10' (ft.) length.
 - Flexible hose fastened by plastic hose clamps (qty=2).
 - UL listed number 723.
 - Cut to shortest length permissible.
- 4) Exterior surface mounted louver:
 - 6.0" diameter discharge.
 - Bird screen.
 - Three (3) gravity operated shutters.
- 5) 1/2" diameter plastic coated steel cable:
 - 10' (ft.) length.
 - Two (2) 1/2" galvanized steel cable clamps for fastening cable to counterweight and blower.
- 6) Counterweight:
 - 3.0" diameter cold rolled steel, painted VAF/VAK black.
 - Weight = 14.0 lbs..
- 7) Overhead pulley system:
 - 1.0"x1.0"x36.0" length structural tubing.
 - two (2) ball bearing pulleys and one (1) resistance pulley.
 - two (2) slide brackets for hanging of system.
 - two (2) pulley safety straps.
- 8) Blower wall support bracket:
 - 12 gage steel.
 - Painted VAF/VAK black



LETTER	ALTERATION	DATE	BY
A	Blower motor had two speeds	6/16/09	B.Brandon

UNLESS SHOWN OTHERWISE TOLERANCES SHOULD BE: 1) .004 2) .01 3) FRACTIONAL DIMENSIONS ± 1/32" 4) ANGLES ± 0° 30'		ALL INFORMATION CONTAINED HEREIN IS PROPRIETARY AND MUST NOT BE REPRODUCED OR MADE PUBLIC WITHOUT WRITTEN CONSENT FROM Vent-A-Kiln Corp.	
Vent-A-Kiln Corp. 51 Botstorf Place Buffalo, N.Y. 14216 Negative Pressure		PROJECT XXX DRAWN BY Brandon	DATE 8/27/03 CHECKED BY SCALE NTS BILL OF MATL
TITLE: Model: 1544 System Layout (P-10BP Blower)		Dwg. No. B-1068	REV A

All Dimensions Inches