

Vent-A-Kiln

Reasons to own a Vent-A-Kiln System:

- * Removes excess heat that emits from the kiln. In an atmosphere where no Vent-A-Kiln system exist, temperatures found in a confined room can range from 110 deg. F. to over 160 deg. F. making an unfavorable environment for you and your kiln. Kilns need to operate in an environment that is between 32 deg. F. and 100 deg. F. to ensure optimal operation of kiln, kiln controls, a comfortable working area and ensure a safe temperature range around combustible ceilings and floors. The National Fire Protection Agency (NFPA) states that temperatures at combustible ceilings and floors be kept below 160 deg. F. (71 deg. C.) near industrial furnaces which can be construed as applicable to kilns. Vent-A-Kiln systems have helped our customers achieve an optimal kiln environment for over 20 years.
- * Captures fumes emitting from inside the kiln. Extreme temperatures chemically alter clays and glazes producing unhealthy fumes and orders. Failure to adequately vent the kiln may allow corrosive fumes that generate during the firing process to corrode the outer metal skin, kiln wiring, firebricks and lead to long term health problems.
- * First in the industry to recognize the need for kiln ventilation and to design and market a system specifically for removal of heat and fumes. Hence, Vent-A-Kiln is the industry benchmark – the system by which all of the competition measures themselves against. Since 1984 we have sold thousands of easy-to-install kiln-venting solutions all over the world. They are simple to maintain and are proven to stand the test of time.
- * Does not require any modification to kiln.
- * Models for all kiln sizes.
- * Ability to move from kiln to kiln.
- * No upsetting of kiln firing balance, internal cold spots, delayed heat up time and fluctuation in internal temperatures as seen with a down draft ventilation system.
- * Best-in-the-industry warranty, we will repair or replace any defects in workmanship or materials for a period of three years from the date of purchase. We feel very strong about our product and want you to share in that feeling.
- * Meets applicable OSHA standards.
- * Cost less than one cent per hour to operate under average conditions.



Options and Accessories Price Schedule

Model Number	Description of System	Unit Price
	Negative Pressure Kits - mounting blower to wall (see diagram back page)	
NP5BP	Negative pressure conversion kit for system with 265 cfm blower	100.00
NP6BP	Negative pressure conversion kit for system with 500 cfm blower.....	107.00
	Swinging Wall Bracket - mounting pulley system to wall and kilns side by side (see diagram back page)	
11-47	Swinging wall bracket utilized with 22", 27", 32" and 37" hood diameters.....	68.00
11-44	Swing wall bracket utilized with 44" hood diameter.....	116.00
11-54	Swinging wall bracket utilized with 54" hood diameter.....	147.00
	Hood Collar with Hanging Bracket – utilize when not ordering a blower	
11-HC5	Hood collar with hanging bracket, 5" diameter.....	79.00
11-HC6	Hood collar with hanging bracket, 6" diameter.....	100.00
11-HC8	Hood collar with hanging bracket, 8" diameter.....	105.00
	Kiln Safety and Operation Management Accessories	
11-KS3	Kiln safety screen, complete free standing three (3) panel set (see back page).....	140.00
11-KS4	Kiln safety screen, complete free standing four (4) panel set.....	190.00
11-KS1	Single panel safety screen, convert existing 11-KS3 to 11-KS4.....	49.00
MTC115	Programmable 115v mini time controller, automatically turns your system on/off (see back page).....	68.00
SST-S	Safety Value Package comes with one 3 panel safety screen and one time controller.....	196.00
SST-L	Safety Value Package comes with one 4 panel safety screen and one time controller.....	243.00

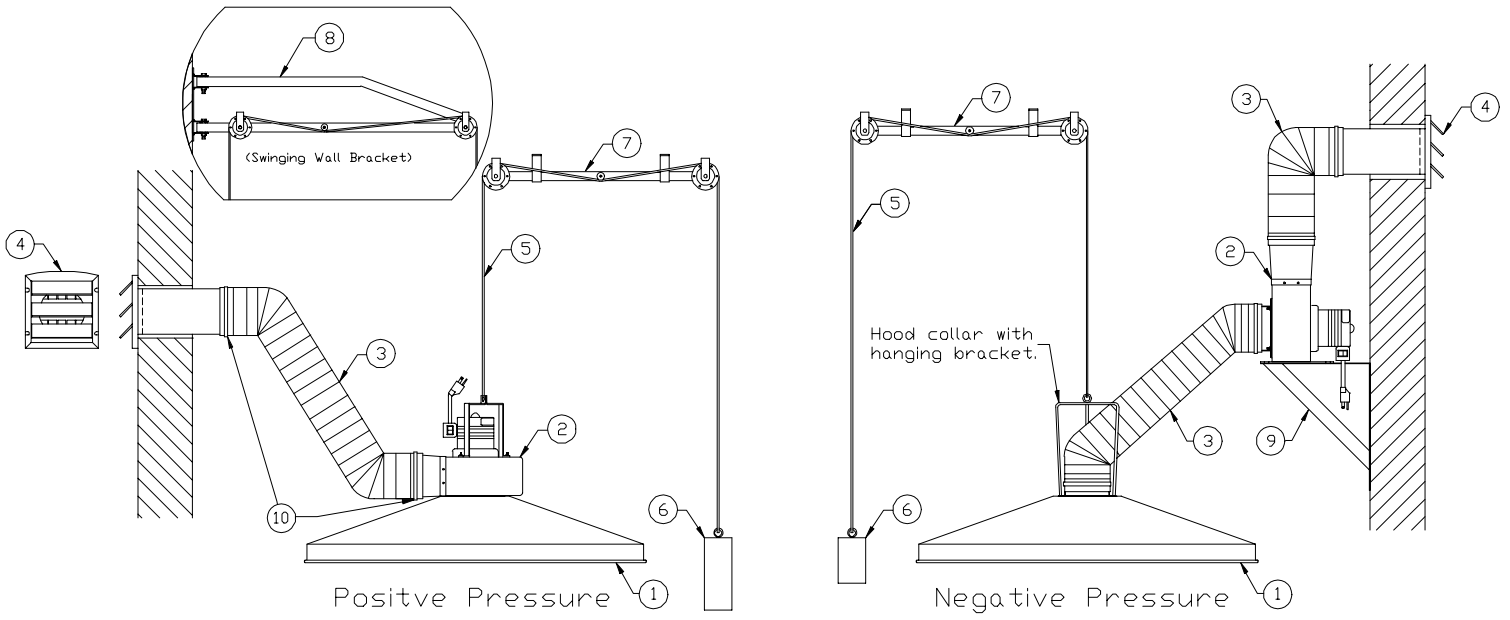
Parts List Price Schedule

P11	265 cfm blower , 1/60/115v, 5" inlet/outlet diameter.....	166.00
P11BP	Negative pressure 265 cfm blower, 1/60/115v, 5" inlet/outlet diameter.....	181.00
P11/220v	265 cfm blower, 1/50-60/220v, 5" inlet/outlet diameter.....	236.00
P10	500 cfm blower, 1/60/115v, 6" inlet/outlet diameter.....	257.00
P10BP	Negative pressure 500 cfm blower, 1/60/115v, 6" inlet/outlet diameter.....	270.00
P10/220v	500 cfm blower, 1/50-60/220v, 6" inlet/outlet diameter.....	341.00
WB	Blower support bracket (265 cfm, 500 cfm), mounting blower to wall.....	61.00
P28BP	800 cfm blower, 1/60/115v (hardwire connections), 8" inlet/outlet diameter.....	404.00
P29BP	1000 cfm blower, 1/60/115-230v (hardwire connections), 8" inlet/outlet diameter.....	410.00
P20BP	1200 cfm blower, 1/60/115-230v (hardwire connections), 8" inlet/outlet diameter.....	456.00
WB1	Blower support bracket (800 cfm, 1000 cfm, 1200 cfm), mounting blower to wall.....	80.00
VAF1PH	400 cfm blower, 1/60/115-230v, hazardous duty (TEXP) motor (hardwire connections).....	980.00
VAF3PH	400 cfm blower, 3/60/230-460v, hazardous duty (TEXP) motor (hardwire connections).....	1103.00
WBVAF	Blower support bracket (400 cfm hazardous duty, single phase and three phase).....	80.00
P15	5" dia. flexible duct exhaust kit (2 clamps, 10 ft. flexible duct and exterior louver with tailpipe).....	46.00
P25	6" dia. flexible duct exhaust kit (2 clamps, 10 ft. flexible duct and exterior louver with tailpipe).....	56.00
P12	5" diameter flexible duct, 10 ft. length.....	36.00
P18	6" diameter flexible duct, 10 ft. length.....	44.00
P22	8" diameter flexible duct, 10 ft. length.....	65.00
P17	5" or 6" diameter flexible duct clamp.....	0.95
P13	3/16" diameter plastic coated steel cable	0.63/ft.
P14	3" diameter pulley, utilized with overhead adjustable height pulley system.....	5.82
P23	Cable clamp, fasten counter weight and blower/hood assembly to steel cable.....	0.63
P26	Overhead bar and pulley assembly.....	31.00

(See Diagram Back Page for System Layout)

Email us at: info@ventakiln.com

System Layout Diagram



- 1) Conical aluminum hood 3) Flexible hose 5) 3/16" dia. coated steel cable 7) Overhead pulley system 9) Blower support bracket
 2) Blower (note placement in drawings) 4) Exterior louver 6) Counterweight 8) Swinging wall bracket 10) Hose clamps

Consult Factory for Square and Rectangular Hoods

MTC115 (Programmable Mini Time Controller)

Automatic starting of ventilation system prior to kiln firing eliminates the chance of forgetting to turn system on. Automatic shut down of system eliminates The chance of forgetting to turn the system off. Total programmable settings 84 per 7 day week 6 on 6 off per day. LCD displays real time as well as programmed time. Timer plugs into 115v receptacle and will operate any device with a maximum load of 15 Amps, 1800 watt and any motor up to 1 hp. Dimensions are 4"x2"x3 1/4" and weighs 5.3 oz.



11-KS3 (Kiln Safety Screens)

Free Standing, Portable, Module, Expandable. Protection from hot kilns during firing. Screens are made with 1/2" round galvanized tube frames and flame retardant canvas. Standard units consist of three hinged 2'x3' panels. Additional panels available. Each panel is imprinted in bright safety yellow. "Caution - Kiln in Operation".



Ventilation for Gas Fired Kilns is Also Available Consult Factory