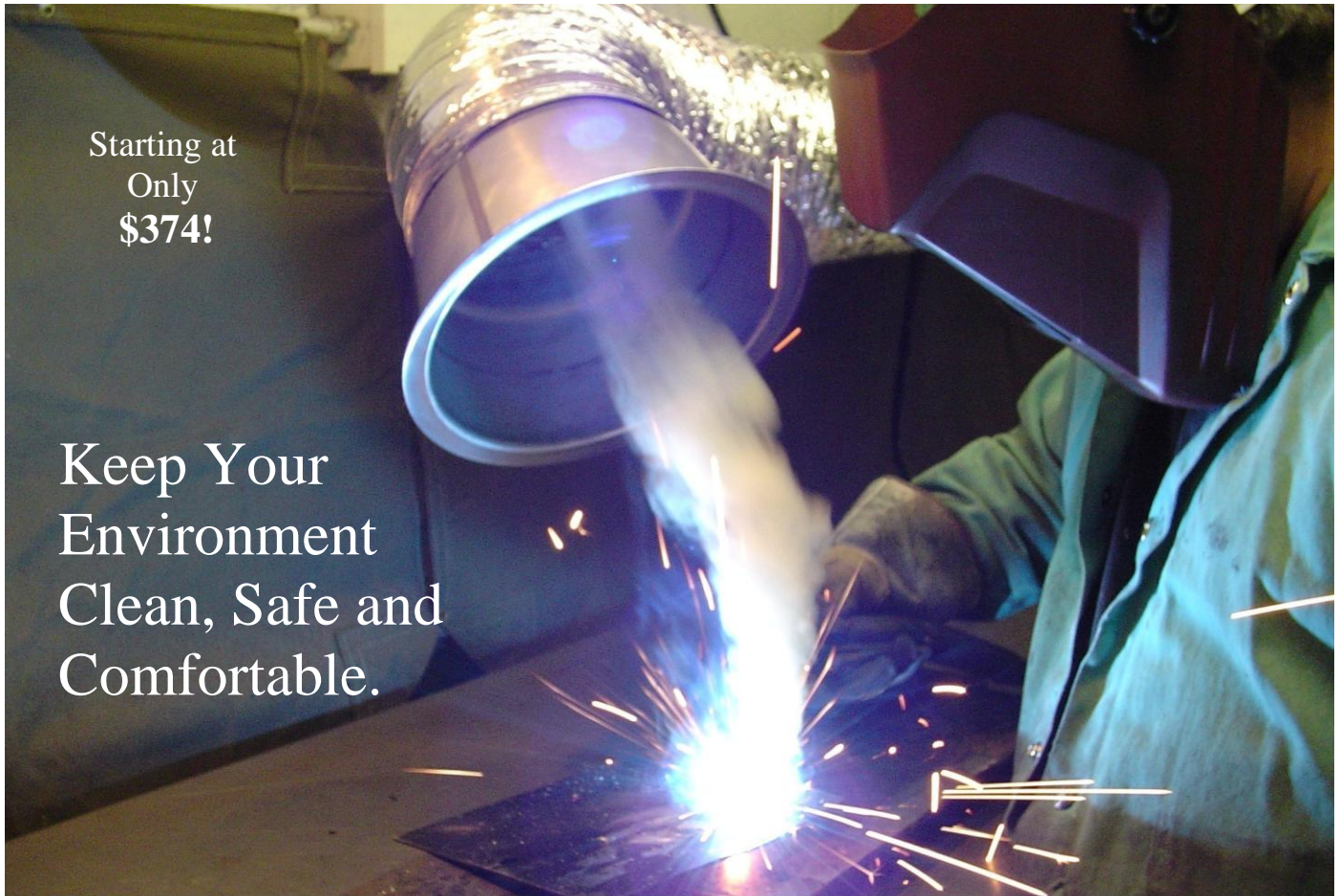


Remove Fumes at Their Source!



Starting at
Only
\$374!

Keep Your
Environment
Clean, Safe and
Comfortable.

Place-A-Vent Model FE-800 has a large-diameter hood, making it ideal for welding and brazing applications.

Removing and ventilating fumes produced by welding, brazing, soldering, laser cutting, plasma cutting and similar operations is a critical concern in today's safety-conscious work environment.

Place-A-Vent is an economical, energy efficient fume extractor that removes smoke, fumes and heat at their source to help assure worker safety and comfort.

Unlike exhaust fans or fixed overhead hoods, Place-A-Vent goes right to the source to capture and remove virtually all process emissions. It employs a negative pressure system that exhaust all fumes quickly to the outside or into existing ductwork.

Place-A-Vent is another quality system from the manufacturer of Vent-A-Fume industrial fume extractors, and Vent-A-Kiln, the leading venting system used in schools and ceramic

studios. We have more than 20 years experience as specialists in removing contaminated air and process emissions at their source. Let us put Place-A-Vent to work for you.

Place-A-Vent System Features:

- Easy to install – all mounting components included
- Can be easily moved to a different location – an advantage over exhaust fans and fixed overhead hood
- Can be modified for multiple work stations
- Larger volume fans and hazardous duty motors available
- Three styles of hood support arms available
- One year warranty



(Top) FE-1200 with a customized hood venting plasma cutting fumes. (Bottom) FE-500 shown at a soldering station.

Place-A-Vent

Place-A-Vent Specifications & Pricing

Models & Specifications

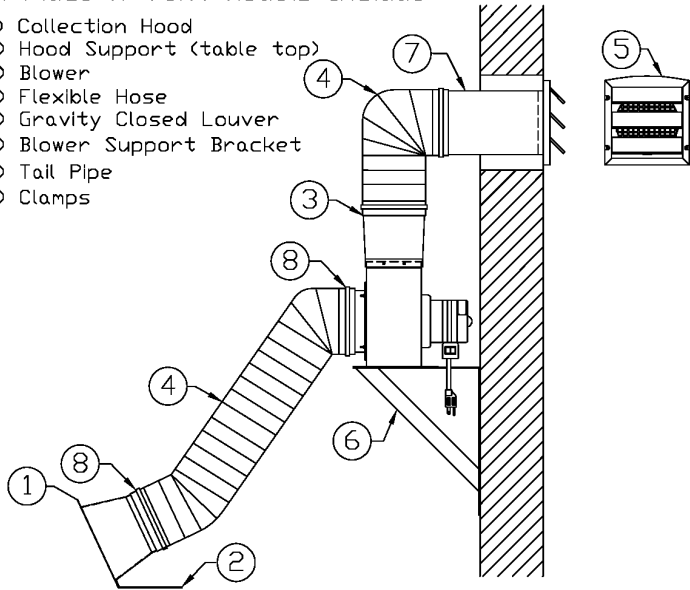
Model	Hp	RPM	Ph/Hz/Volts*	cfm@0.0"w.g.	Hood Size (in.)	Flex Hose (ft.)**	Inlet/Outlet (in.)	Price
FE-500	1/8	1600	1/60/115	450	8.0	12.0	6.0 dia.	\$374.00
FE-800	1/6	1100	1/60/115	800	10.0	12.0	8.0 dia.	\$541.00
FE-1200	1/2	1500	1/60/115-230	1150	10.0	12.0	8.0 dia.	\$738.00

* Model FE-500 includes a 6-inch, three-prong power cord. Models FE-800, FE-1200 need to be hard-wired or have a power cord added.

** Longer lengths of Flex Hose available at \$6.25 per ft.

All Place-A-Vent Models Include:

- 1) Collection Hood
- 2) Hood Support (table top)
- 3) Blower
- 4) Flexible Hose
- 5) Gravity Closed Louver
- 6) Blower Support Bracket
- 7) Tail Pipe
- 8) Clamps



Customized Systems Available

Model FE-500 Shown

Accessories:

Flexible Gooseneck and Mechanical Support Arms



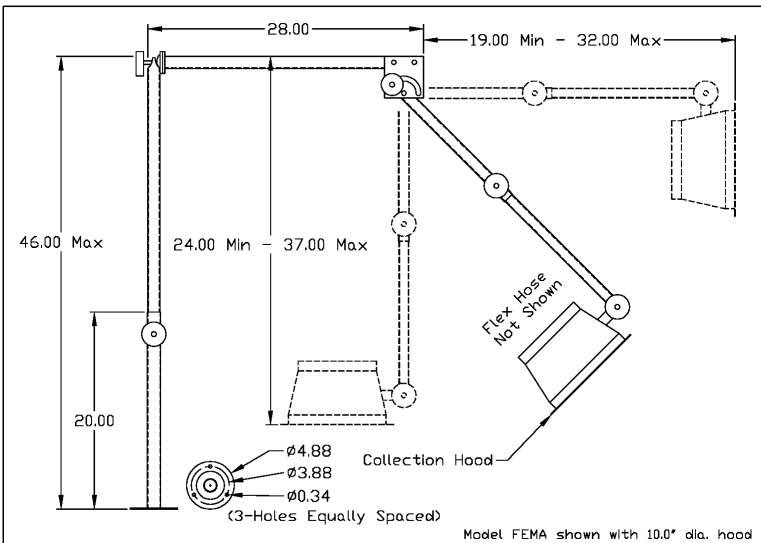
Gooseneck Arm with Clamp Base secures the support arm to surfaces up to 2-inches thick. Polyurethane pads on the clamp prevent marring of mounting surfaces.



Gooseneck arm with Magnetic Base provides 100-lbs. of pull strength for extra holding power. It can be placed on any magnetic surface.



This adjustable Mechanical Arm allows for support and positioning of collection hood and flexible hose. The base can be mounted to a bench top, wall or ceiling and the locking-pivoting mechanism allows you to reach virtually any position. Works with all FE model Place-A-Vent fume extractors (see diagram).



Model FEMA shown with 10.0" dia. hood

Model	Description	Length (in.)	Price
FECB23	Gooseneck with Arm Clamp	23.0	\$99.00
FEMB23	Gooseneck with Magnetic Base	23.0	\$97.00
FEMA	Adjustable Mechanical Arm	See diagram	\$156.00

Place-A-Vent

Vent-A-Kiln Corporation

51 Botsford Place – Buffalo, NY 14216

Phone: (716) 876-2023 – Fax: (716) 876-4383

Toll-Free: 877-876-8368

E-Mail: info@ventafume.com – www.VentAFume.com