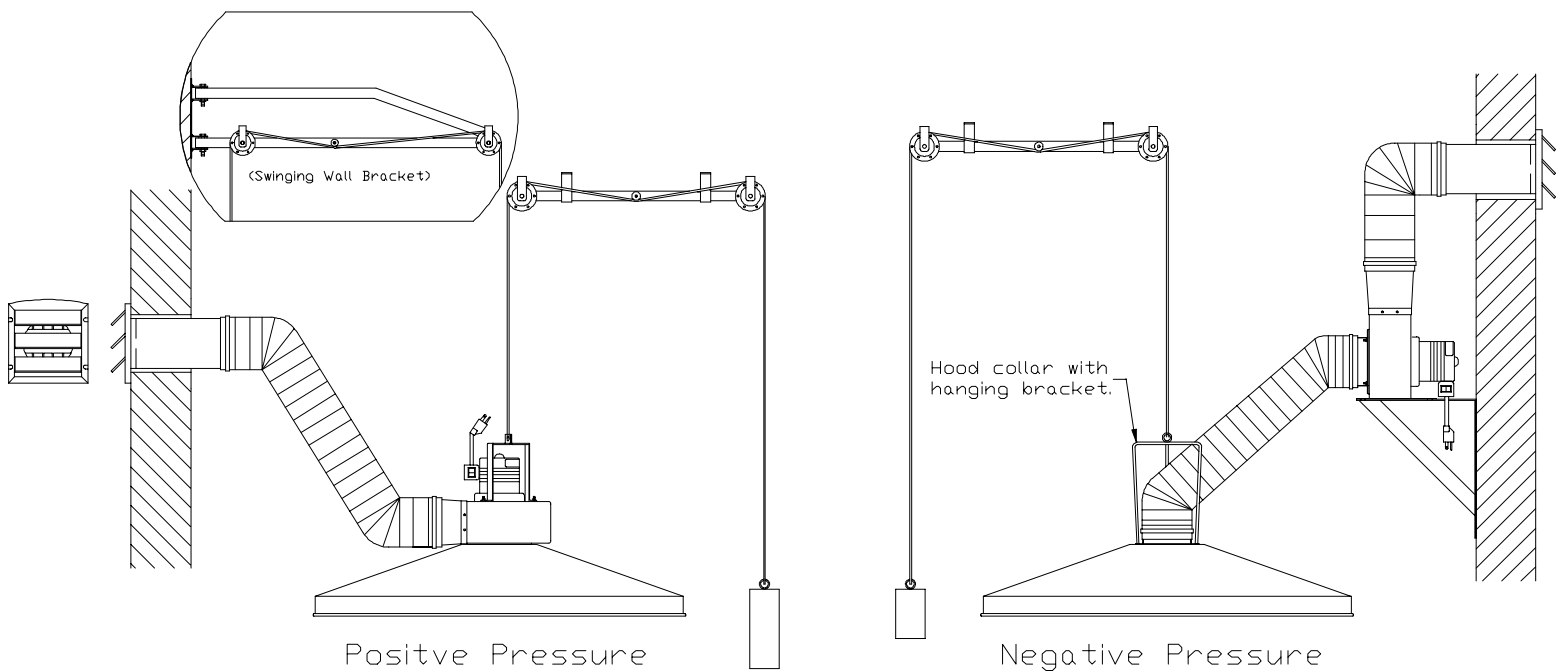


Vent-A-Fume Vent-A-Kiln Corp.

Custom-Designed Hood and Blower Systems/Variable Height Kiln Exhaust Systems

Operation & Equipment Manual (OEM)



Important: Return this manual to the End User. Must be kept for their files.

Visit us on Line at Address's Below

Vent-A-Kiln corp. 51 Botsford Place Buffalo, NY 14216
PH (716) 876-2023 FAX (716) 876-4383
www.ventakiln .com info@ventakiln .com
www.ventafume.com info@ventafume.com

Important: Return this manual to the End User. Must be kept for their files.

Three Year Limited Warranty

All parts, controls and manufacturing workmanship of your Vent-A-Kiln system are guaranteed to be free from defects for a period of three (3) years from date of shipment. If any part is proved to be faulty within the warranty duration, it will be replaced or repaired at the option of Vent-A-Kiln Corporation, without charge. End user must contact Vent-A-Kiln Corporation customer service prior to returns for authorization. *Failure to follow recommended maintenance schedule will void warranty.*

No credit or reimbursement shall be made for any replacement part and repair service performed or provided by the end user (customer).

(please fill out the following information for future reference)

Ventilation System Model Number: _____ . (Yellow Sticker)

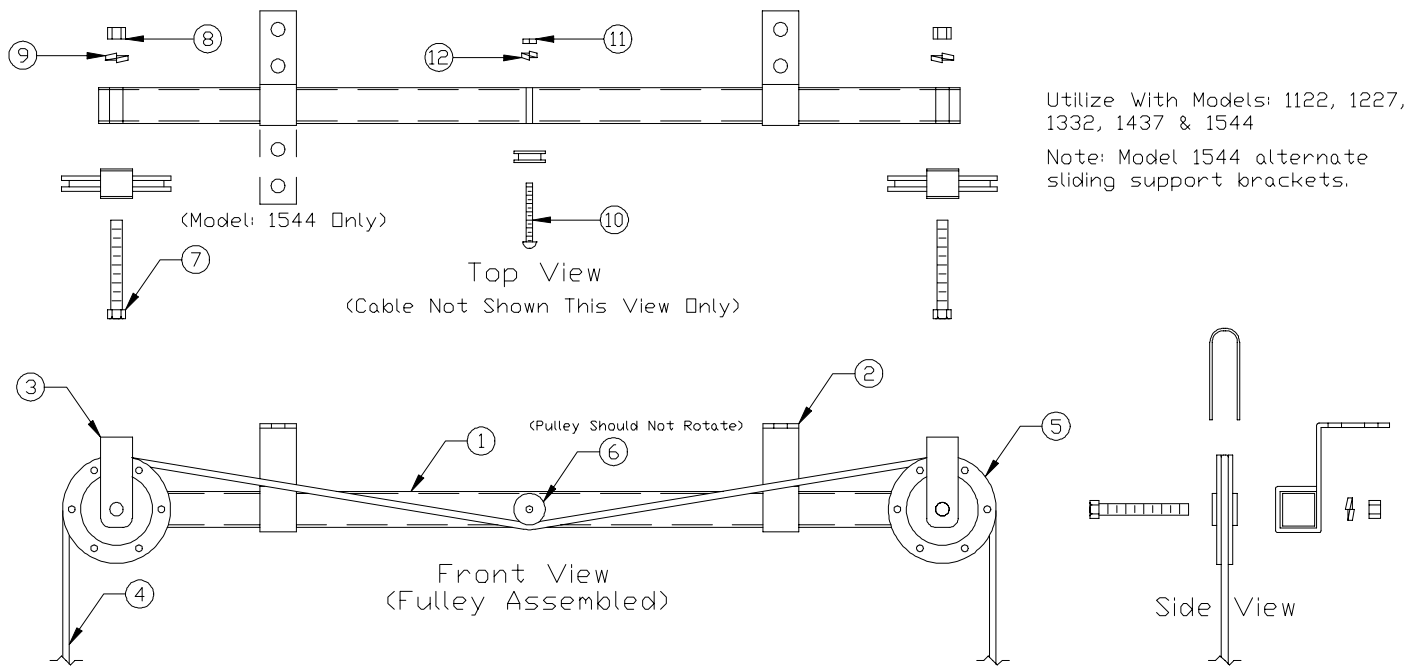
Ventilation System Serial Number: _____ . (Yellow Sticker)

SAFETY PRECAUTIONS

- Hood must have a minimal overhang of 2.0” on all sides of process to be vented.
- Bottom of hood must be 2.0” - 4.0” above process.
- Hood must be centered over process.
- Utilize shortest length permissible when installing flexible hose.
- Flex hose should not have excessive sag when in operation (see assembly of system).
- Discharge runs greater than 10 feet consult factory.
- Electrical receptacles must be properly grounded.
- Follow any and all warning labels.
- Keep unauthorized personnel away from area being ventilated.
- Follow recommended maintenance schedule provided in this manual (reference warranty also).

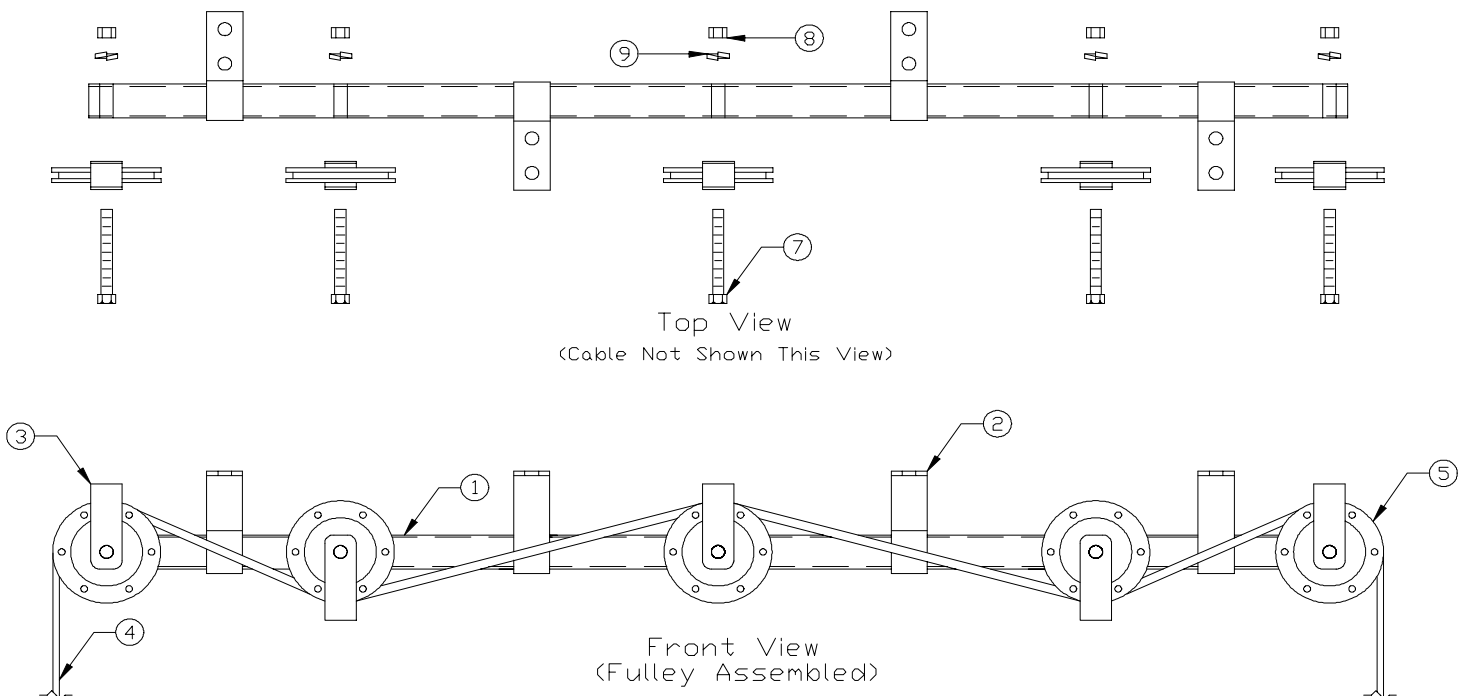
Important: Return this manual to the End User. Must be kept for their files.

Assembly and Installation of Overhead Pulley Support Bracket

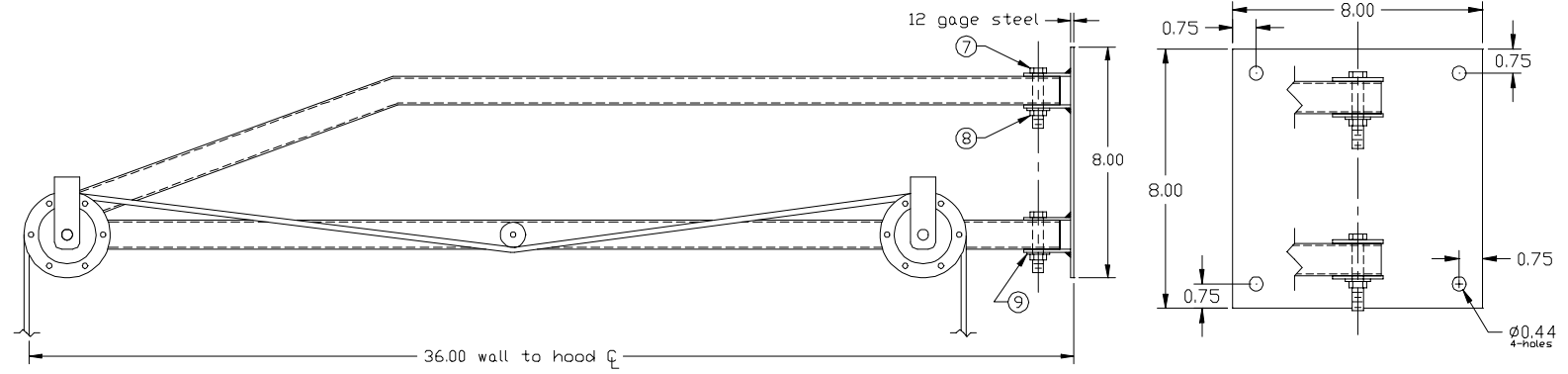


Assembly: Starting with overhead support bar (1) slide into position as shown the sliding support brackets (2) Note: model 1544 alternate sliding support brackets as shown. Fasten the resistance pulley (6) to overhead support bar (1) utilizing 10-32x1 1/4" bolt (10) lock washer (12) 10-32 nut (11) as shown (**pulley should not rotate**). Fasten "U" straps and pulleys to overhead support bar (1) as shown by sliding "U" strap (3) over pulley (5), aligning holes and fasten to overhead support bar utilizing 3/8-16x2 1/2" bolt (7) lock washer (9) 3/8-16 nut (8). Install assembly to ceiling (centering cable over kiln, see blower, hood and counterweight assembly) utilizing 3/8" diameter holes in sliding support brackets (*hardware not included*). Install 3/16" diameter plastic coated cable as shown making sure cable is resting in pulley (5) and (6) groove and "U" strap (3) will not allow cable to leave pulley. See diagram below for assembly of **model: 1654** overhead pulley support bracket (*no resistance pulley (6) in this assembly*). Assemble as shown making sure "U" strap (3) and sliding support brackets (2) are alternated. Continue to Blower, Hood and Counter weight Assembly.

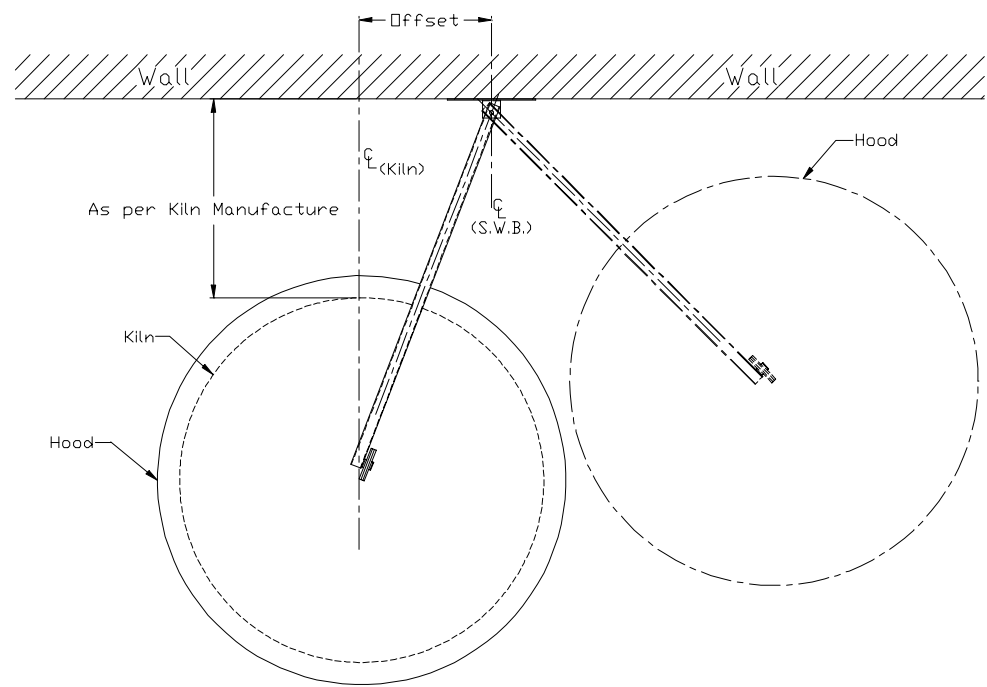
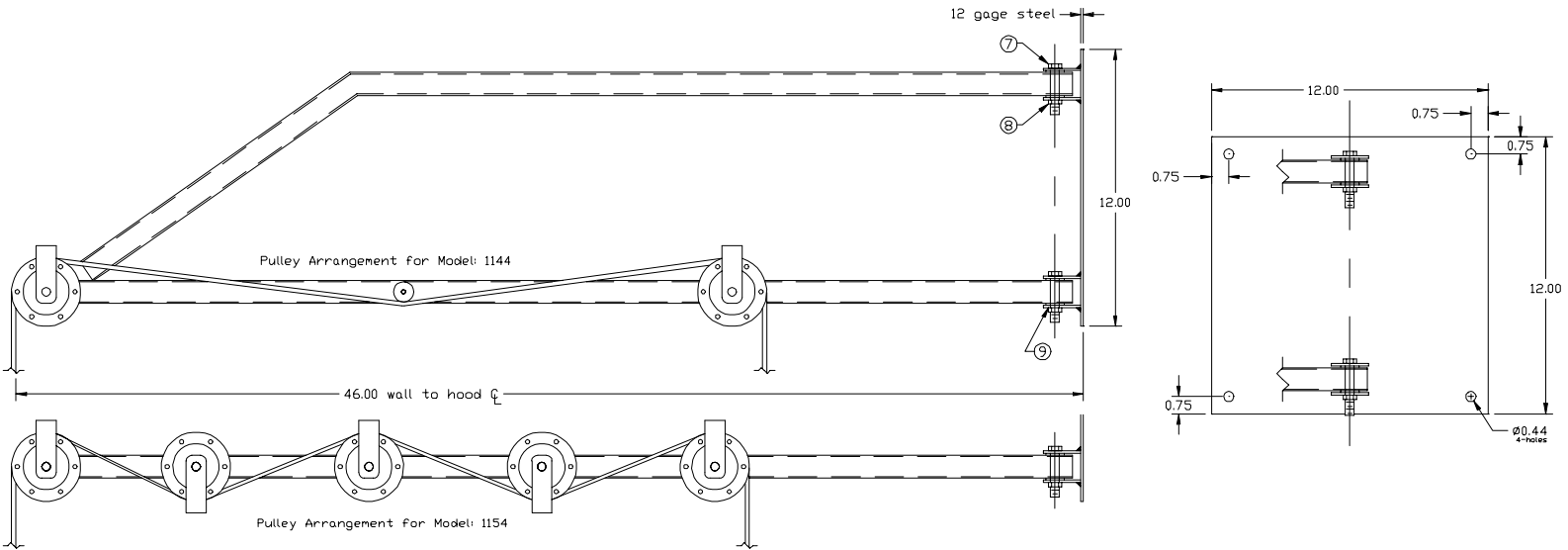
Assembly of Model: 1654 Overhead Pulley Support Bracket



Assembly and Installation of Model: 1147, 1144 & 1154 Swinging Wall Bracket (Continuous Friction Hinge Design)



Assembly (S.W.B.): Reference **Assembly and Installation of Overhead Pulley Support Bracket** section for assemble of model: 1147, 1144 & 1154 swinging wall bracket pulleys. Installation requires hardware which is not included with unit in order to anchor to side wall. 0.44" diameter holes are provided in support plate as shown. Tighten hinge hardware (7), (9) and (8) to ease of movement desired or to keep bracket stationary.



Anchoring to Side Wall: When anchoring model: 1147, 1144 & 1154 to wall you need to offset the kiln centerline from the S.W.B. centerline as shown. Offset accordingly to allow clearance of hood when opening the kiln's lid. 32.0", 27.0" & 22.0" dia hoods do not need to be offset for use with a single kiln. However, you will need to offset the bracket when ventilation of two kilns is desired.

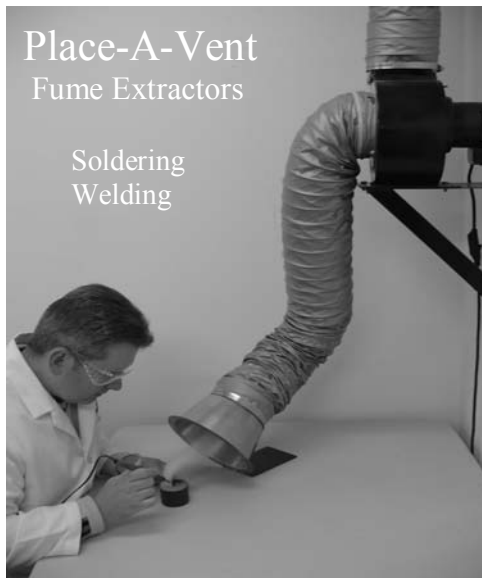
Maintenance Schedule

The Following are Recommended Once a Month (Unless Noted)

- 1) Inspect flexible duct for any damage (tears).
- 2) Inspect flexible duct at all collar locations for leaks from loose clamps.
- 3) Inspect cable utilized for counter weight pulley system (integrity of cable and its coating).
- 4) Inspect cable clamps and tighten as needed.
- 5) Inspect blower for unusual vibration and tighten blower squirrel cage set screw as needed.
- 6) Inspect blower and hood connection (positive pressure blower mount) and tighten hardware as needed.
- 7) Inspect blower and blower support bracket (negative pressure blower mount) and tighten hardware as needed.
- 8) Inspect overhead or swinging wall bracket pulley system for any loose hardware and tighten accordingly (resistance pulley does not rotate).
- 9) Clean system free of any dust build up on or inside hood, flexible duct and blower (disconnect power).
- 10) Oil motor every *six months* utilizing SAE 20 non-detergent oil (2-4 drops). Oil port for the motor is located at end of motor housing (P-11 blower motor does not require oiling).

* Vent-A-Fume/Vent-A-Kiln Corporation is not responsible for improper installation, maintenance or unattended equipment *

Consult Factory for Replacement Parts



Bench Mount Ventilator



For ventilation of small kilns, burnout furnaces and ovens

Square & Rectangular Hood Systems



Diverse systems available

Mini Time Controller



7 day programmable timer
Automatically starts and stops system